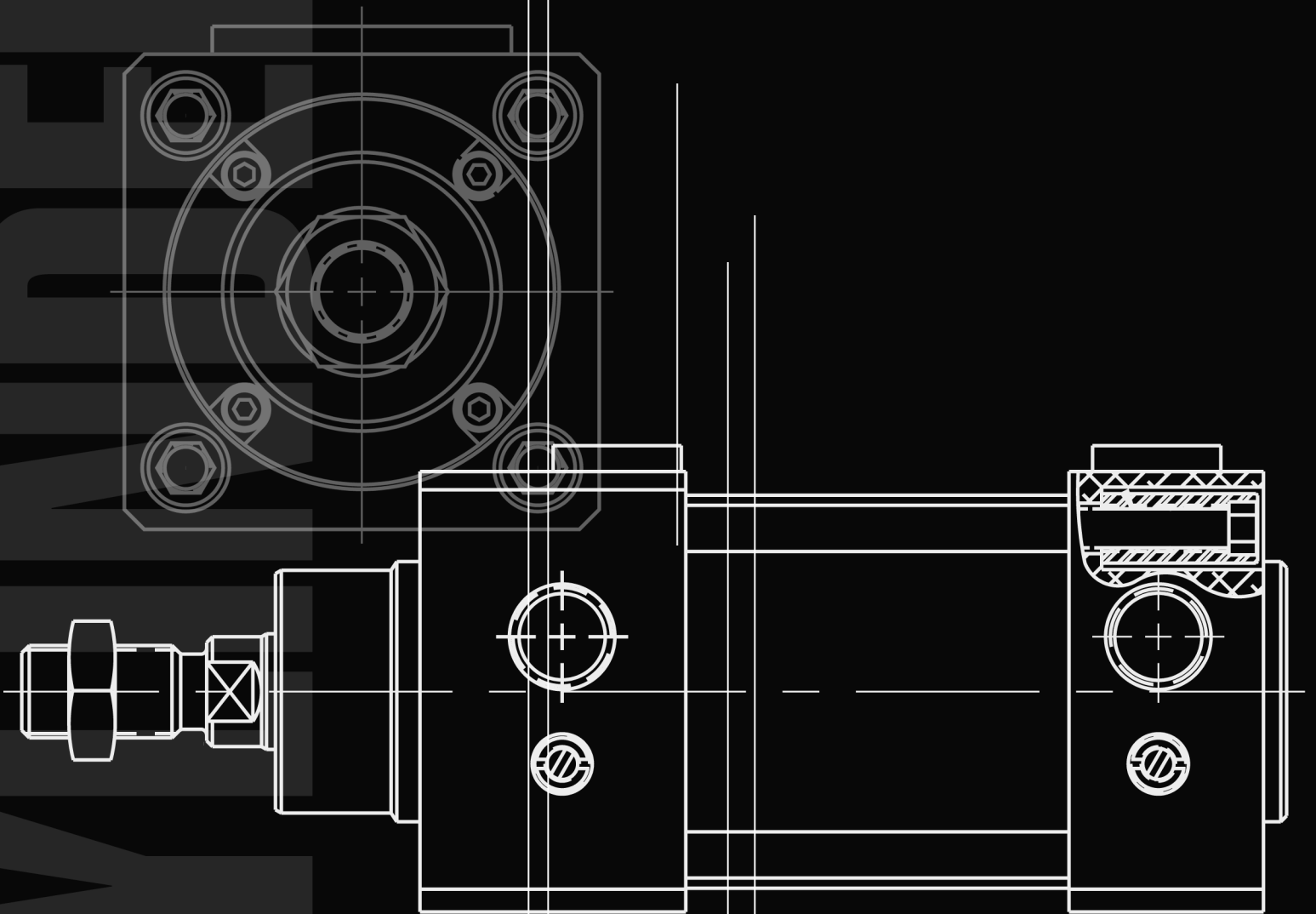


numatics



**DCX ISO/VDMA  
Cylinders**

## FEATURES

- Removeable Rod Gland
- Available with BSPP 1179 Ports
- 32mm – 200mm Bore Sizes
- Double Acting
- Magnetic Thru-Wall Sensors
- Cylindicator Ready Available
- Adjustable Cushioning
- To DIN/ISO 6431 and VDMA 24562
- High Strength, Induction Hardened Steel (100,000 psi minimum yield) Piston Rod Has A Ground, Polished and Hard Chrome Plated Surface Providing Maximum Life Of Bushing And Seals.
- Round Aluminum Cylinder Tubing With “Hard-Coat” ID
- Seals Of Carboxilated Nitrite
- Lifetime Lubrication
- Designed To Meet DCX Specifications

Conforms to BSPP 1179-1 Port, 228-1 Thread

## TECHNICAL DATA

- Ports – G 1/8 to G 3/4 (1/8 NPTF to 3/4 NPTF)
- Temperature – -20°C to +80°C (-4°F to 176°F)
- Medium Temperature – max. 80°C (max. 176°F)
- Operating Pressure – min. 0.8 bar/max 10 bar  
12 psig to 150 psig
- Medium – Filtered, lubricated,  
or lubricated compressed air

## HOW TO ORDER **D M 032 / 0220 000 A1**

### SERIES

D = Designed to meet DCX Specifications

### VERSION

M = Double acting with magnetic  
G = Double acting with magnetic and cylindicator

**BORE DIAMETER IN mm**  
(32-200)

/ = BSPP 1179 N = NPTF Ports G = G Ports  
(position 1, 2, 3 & 4 except GG model = 2, 3 & 4)

Cylinder stroke in mm

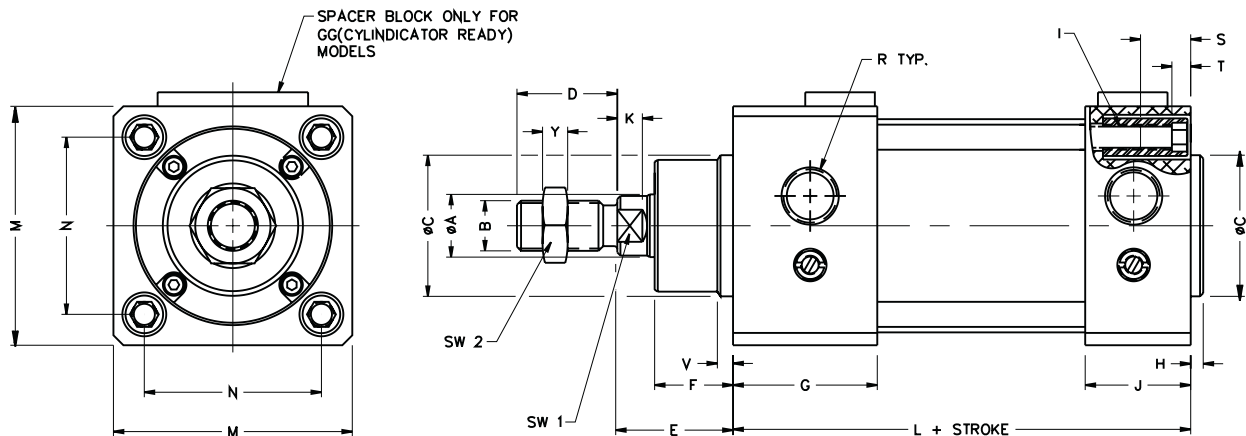
### CYLINDER MOUNTING ACCESSORIES

000 = Basic no mount X0  
C01 = Foot bracket VC01  
CF2 = Front flange mount VC02  
CR2 = Rear flange mount VC02  
C03 = Foot bracket inside VC03  
C07 = Eye bracket VC07  
C08 = Clevis Bracket, wide clevis VC08  
C09 = Pivot ZC9  
(Standard; pivot in the center of cylinder tube, if position of pivot should be different, give dimension X1.)  
C13 = Oscillating joint bracket VC13  
C14 = Oscillating bracket, narrow clevis VC14  
CWB Mounting for Welker Bearing

### SPECIAL OPTIONS

A1 = No Options  
RB = A1 and Rod Boot  
00 = Stainless Steel Rod  
SH = SU and Rod Boot

## DIMENSIONS



\*Dimension for DM model/Dimension for DG model.

## DCX Model - Cylindicator Ready

Numatics Actuator offers this series in a cylindicator ready version, proximity sensor, in addition to the magnet installed on the piston. This version incorporates two M6x1 tapped holes spaced 35mm apart for mounting the sensor at position #1. As well as having the hole for the cylindicator tapped 3/8" NPT and supplied with a port plug, regardless of cylinder port option.

**Probe Length:** When ordering "G" version of this cylinder the following is a table of the probe lengths for the in-port proximity switches.

Note: All cylinders utilize captive spacers to maintain standard probe lengths.

Bore Size	Probe Length
32mm – 80mm	26mm
100mm	32mm
125mm – 160mm	52mm
200mm	73mm

**Stroke to Go:** These Cylindicator ready cylinders are designed to have stroke to go, which means that the proximity switch will activate before the cylinder reaches end of its stroke in either direction. The standard distances of stroke to go are shown in the following table.

Bore Size	Rod End	Cap End
32mm – 63mm	13mm ± 2mm	8mm ± 2mm
80mm and up	14mm ± 2mm	12mm ± 2mm

## Rod Boot Information

Specials option RB and SH add a rod boot to the cylinder, which requires an extra amount of rod extension to accommodate the rod boot.

### Required Extra Rod Extension:

32mm-63mm Bore

$$\text{Extra Rod Extension} = [.104 \times \text{Stroke (mm)}] + 13\text{mm}$$

80mm-200mm Bore

$$\text{Extra Rod Extension} = [.059 \times \text{Stroke (mm)}] + 13\text{mm}$$

Note: The extra rod extension must be allowed for when determining mounting dimensions. For trunnion mounted cylinders this rod extension is added to the XI.

### Rod Boot Outside Dimensions:

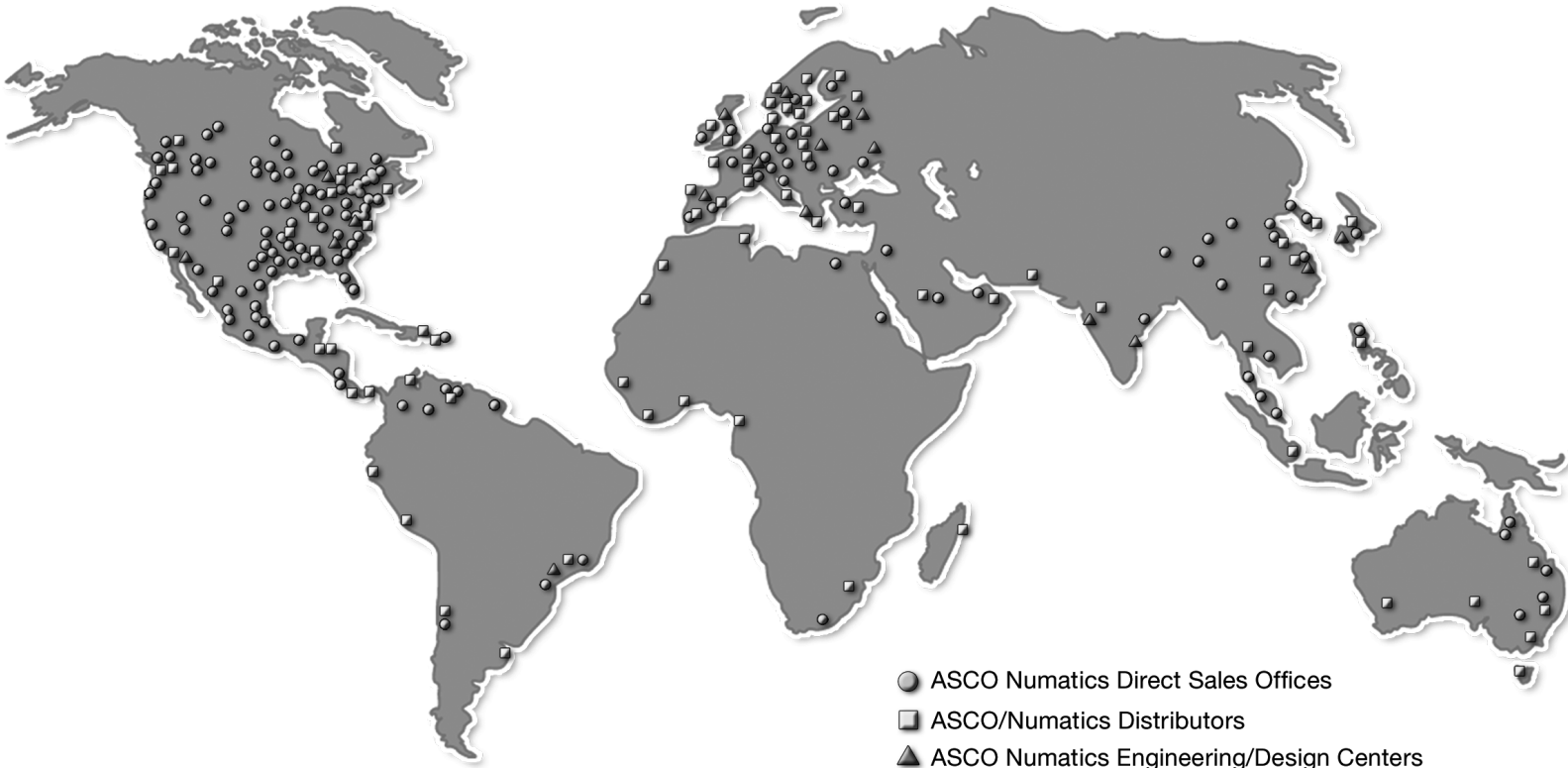
Below is a chart with the diameters of the rod boots for the ISO/VDMA cylinders.

Bore Diameter (mm)	Rod Boot Outside Diameter
32	2.25"
40	2.25"
50	2.63"
63	2.63"
80	3.38"
100	3.38"
125	3.75"
160	4.13"
200	4.13"

Note: The Rod boot outside diameter on 32mm and 40mm cylinders is larger than the cylinder end cap square.

# NUMATICS

*World Class Supplier  
of Pneumatic Components*



## WORLD HEADQUARTERS

### USA

**Numatics, Incorporated**

46280 Dylan Drive  
Novi, Michigan 48377

P: 1-888-Numatics  
1-888-686-2842

### Canada

**Numatics, Ltd**

P: 519-452-1777

### Mexico

**Numatics de Mexico S.A. de C.V.**

P: 52-222-284-6176

For a comprehensive listing of all Numatics production and distribution facilities worldwide, visit:

**[www.numatics.com](http://www.numatics.com)**